

BECAUSE
IMPROVEMENT
NEVER
STOPS



ALLEGRETTO 2-7
SONETTO 3-9
OIL-INJECTED SCREW
COMPRESSORS

Can a small screw compressor meet your long requirements list? ALUP's Allegretto 2-7 and Sonetto 3-9 are up to the task. Thanks to its Variable Speed Drive technology, the Allegretto's reliability, efficiency and flexibility exceed even your toughest expectations. It's extra quiet too, allowing you to install it close to the point of use. Both the Allegretto and the fixed-speed Sonetto come with a state-of-the-art controller to give you superior ease of use. So if you're looking to support your business with an entry-level rotary screw compressor, the Allegretto and Sonetto will be your most valuable partner for years to come.

POWERFUL & EFFICIENT PERFORMANCE

- Allegretto 5 and 7 are up to 30% more efficient than fixed-speed.
- In-house designed and produced air end provides industry-leading free air delivery at a low energy cost.
- Screw air end allows for continuous use without cool-down periods.
- IE3 premium efficiency motor lowers your Total Cost of Ownership.



ROBUST & RELIABLE

- Removable panel for easy service.
- An (optionally) integrated dryer ensures dry quality air.
- Optional oil heater prevents condensation, even in low load conditions.
- The Allegretto's VSD technology ensures lower stress on key components and lower starting currents.

FLEXIBILITY & EASE OF USE

- Power sizes available from 2.2 to 7.5 kW.
- Advanced Infologic² connect controller offers easy, remote control and monitoring.
- A choice of floor- and tank-mounted models.
- A wide range of options to customize the compressor to your needs.

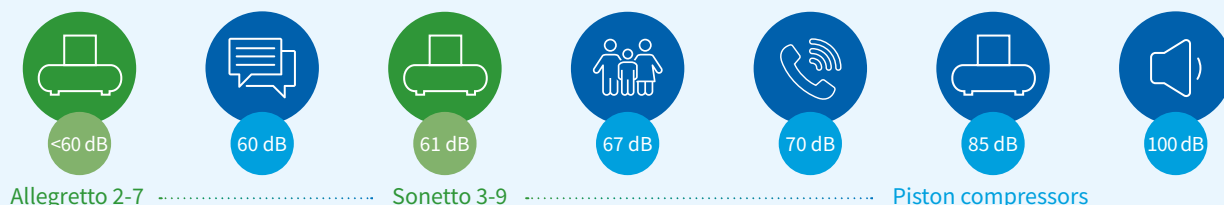
A FLEXIBLE RANGE TO MEET YOUR NEEDS

SONETTO 3-9 (FIXED-SPEED)
Industry-leading Free Air Delivery
Continuous duty
Advanced controller
Floor-mounted and tank-mounted models
Optional condensation prevention package
Optional clean air version with integrated dryer and filter
Super silent

ALLEGRETTO 2-7 (VSD)
Industry-leading Free Air Delivery
Continuous duty
Advanced controller
Floor-mounted and tank-mounted models
Optional condensation prevention package
Optional clean air version with integrated dryer and filter
Up to 7 decibels quieter than fixed-speed
Energy savings up to 30% compared to fixed-speed
Less component wear for longer lifetime and lower operational costs
Lower starting currents increase reliability

YOUR SILENT WORKHORSE

LOW NOISE MATTERS



Restrictions on workplace noise pollution are becoming increasingly rigorous. With reason, as noise directly affects the health and comfort of your employees. The Allegretto 2-7 and Sonetto 3-9 are super-silent, with sound emissions as low as 57 dB(A). A comparable piston compressor is about 25 dB(A) louder. That is a significant difference, knowing that every 3 dB(A)-increase doubles noise perception.

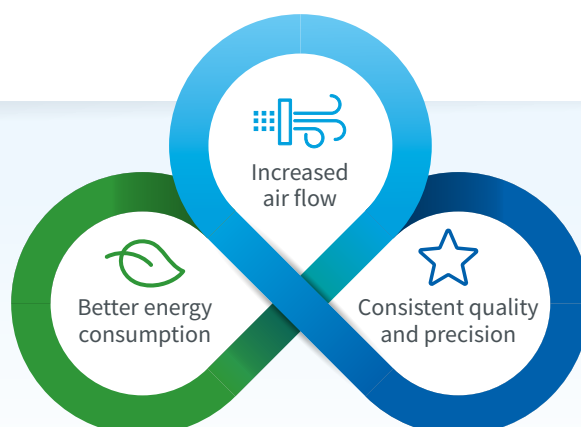
THE BIG BENEFITS OF A SMALL VSD COMPRESSOR

Variable Speed Drive (VSD) compressors feature an inverter to allow the motor to modulate its speed to match the fluctuations in air demand. That means your compressor doesn't keep running at 100% when you don't need its maximum capacity. The question is, does VSD make that much of a difference in the smallest compressor? Built in ALUP's Allegretto, it does:

- ① **HIGHER RELIABILITY:** A more smooth and gradual start-up ensures an 80% decrease in stress on bearings and belts for a longer lifetime and lower maintenance costs. It also reduces the inrush current to prevent electrical components from overheating and to avoid utility provider penalties.
- ② **LOWER SOUND LEVELS:** Lower, quieter element and fan speeds lower sound levels significantly.
- ③ **ENERGY SAVINGS:** The larger Allegretto models use up to 30% less energy than their fixed-speed counterparts to decrease your operational costs.
- ④ **REDUCED INSTALLATION COST:** With fixed-speed compressors, changes in air demand can lead to pressure fluctuations in the system, which require a larger air vessel to act as a buffer. With a VSD compressor, and its fewer and smaller pressure fluctuations, a smaller vessel will suffice.

REVOLUTIONARY ASSEMBLY FOR MAXIMUM CONSISTENCY

The Allegretto and Sonetto's air end is manufactured on a dedicated, fully automated production line, preventing human error to ensure maximum consistency in performance and reliability. As a result, you enjoy:



POWERFUL ENGINEERING

SOUND-ATTENUATING CANOPY: Reduces sound emissions to comfortable levels as low as 57 dB(A).

IE3 EFFICIENCY MOTOR: The IE3 premium efficiency motor gives you continuous operation.

NEXT-GENERATION AIR END: In-house developed to give you more air with greater efficiency. The screw air end provides continuous use without cool-down periods.

HIGH-QUALITY INVERTER: Allows the compressor to adapt its motor speed to your air demand for superior reliability and advanced energy savings.

REFRIGERANT DRYER: If your production requires dry, quality air with a low dew point, a refrigerant dryer can be added to your compressor.

RECEIVER: Choose between a floor- or a tank-mounted model.



ADVANCED MONITORING, CONTROL & CONNECTIVITY

The state-of-the-art Infologic² connect controller – included as standard – gives you easy operation and remote monitoring, control and insights to optimize the performance of your compressor:

- LARGE, INTUITIVE DISPLAY
- CONNECTIVITY FOR REMOTE MONITORING AND CONTROL
- DELAYED SECOND STOP ENERGY SAVINGS
- REAL-TIME WARNINGS AND SHUTDOWN ALARMS
- SERVICE STATUS, HISTORY AND NOTIFICATIONS
- MULTIPLE PRESSURE BAND SETTING THROUGH THE ICONS APP
- LEAKAGE DETECTION
- OVER-THE-AIR SOFTWARE UPDATES

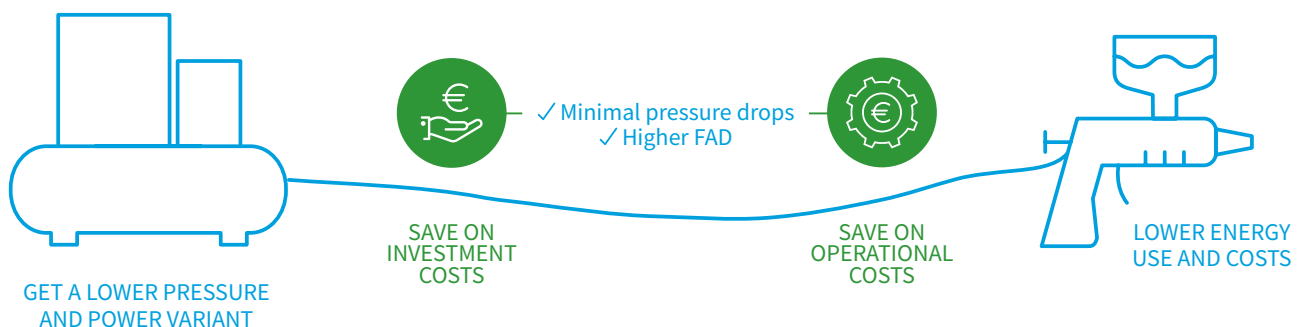
THE BENEFITS OF POINT OF USE INSTALLATION

Thanks to their quiet operation and integrated design, the Allegretto and Sonetto can be installed close to the point of use.

That means you don't need a separate compressor room and you

can save on floor space, piping, and installation costs.

Our smallest screw compressors allow you to reduce your investment and operational costs too, as you can select a lower pressure and power variant and eliminate pressure drops throughout your piping network.



OUTPERFORMING PISTONS

While pistons are often the automatic choice for smaller compressors, the Allegretto and Sonetto deliver compelling benefits for growing businesses.

THE ALLEGRETTO AND SONETTO OFFER:



LONGER
WORKING
HOURS



A QUIETER
OPERATION



CLEANER
AIR



LOWER
COST OF
OWNERSHIP

	Piston compressors	Screw compressors
Air yield	70-75% of intake air	95% of intake air ⚙️ Less power consumption for the same air delivery
Sound level	Greater than 80 dB(A)	From 57 to 68 dB(A) ⚙️ As quiet as a household appliance
Operation	For intermittent use	For intermittent and continuous use ⚙️ Ready for your growing air needs
Air quality	High residual oil content and moisture	Low oil content and dry air (with integrated dryer) ⚙️ Protect your tools and save on maintenance
Vibrations	High	None ⚙️ Enjoy higher reliability and less downtime
Starting current	7-10 times the nominal value	0.5 times nominal value for VSD; 3-5 times nominal value for fixed-speed ⚙️ Lower your installation costs



OPTIONS FOR CUSTOMIZATION AND PERFORMANCE



CONDENSATE PREVENTION

Rotary screw compressors sometimes run the risk of condensation at low load conditions. The Allegretto and Sonetto eliminate the chance of this happening with a host of optional features, including an oil heater, a tropical thermostat, and a 500-liter tank.

TECHNICAL SPECIFICATIONS

Model	Max. working pressure	Reference working pressure	Free Air Delivery @ reference conditions*			Motor power		Noise level measured at 70% load**	Weight		
									Base-mounted	Tank-mounted 200L.	Tank-mounted 200L. + dryer
	Bar	Bar	m³/h	l/min	cfm	kW	hp	db(A)	kg		
Allegretto 2	8	7.5	21.6	360	12.7	2.2	3	57	110	165	190
	10	9.5	17.6	293	10.3						
Allegretto 3	8	7.5	27.7	462	16.3	3	4	57	115	170	195
	10	9.5	21.6	360	12.7						
Allegretto 4	8	7.5	34.9	581	20.5	4	5.5	58	120	175	200
	10	9.5	30.2	503	17.8						
Allegretto 5	8	7.5	53.6	894	31.6	5.5	7.5	61	130	185	210
	10	9.5	45.4	756	26.7						
Allegretto 7	8	7.5	62.3	1038	36.7	7.5	10	61	140	195	225
	10	9.5	58	966	34.1						

* Unit performance measured according to ISO1217, Annex E, latest edition

** Noise level measured at 70% load according to ISO2151 2004

Model	Max. working pressure	Reference working pressure	Free Air Delivery @ reference conditions*			Motor power		Noise level **	Weight				
									Base-mounted	Tank-mounted 200L.	Tank-mounted 200L. + dryer	Tank-mounted 270L.	Tank-mounted 270L. + dryer
	Bar	Bar	m³/h	l/min	cfm	kW	hp	db(A)	kg				
Sonetto 3	8	7.5	20.6	343	12.1	2.2	3	61	110	165	190	180	205
	10	9.5	16.9	281	9.9								
Sonetto 4	8	7.5	27.6	460	16.2	3	4	61	115	170	195	185	210
	10	9.5	21.5	359	12.7								
Sonetto 5	8	7.5	34.7	578	20.4	4	5.5	62	120	175	200	190	215
	10	9.5	30.1	502	17.7								
Sonetto 7.5	8	7.5	51.5	858	30.3	5.5	7.5	66	130	185	210	200	225
	10	9.5	45.4	756	26.7								
Sonetto 9	8	7.5	61.7	1028	36.3	7.5	10	68	140	195	225	210	240
	10	9.5	57.7	961	33.9								

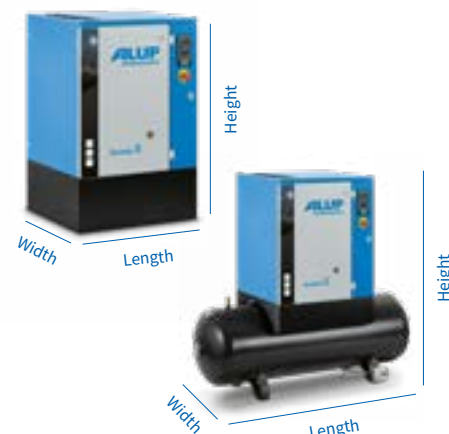
* Unit performance measured according to ISO1217, Annex C, latest edition

** Noise level measured according to ISO2151 2004

DIMENSIONS

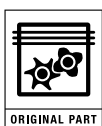
Model	Allegretto 2-7			Sonetto 3-9		
	Length	Width*	Height	Length	Width*	Height
Base-mounted	620	630	975	620	630	950
Tank-mounted 200 L.	1430	600	1285	1430	600	1260
Tank-mounted 200 L. with dryer						
Tank-mounted 270 L.	N/A	N/A	N/A	1540	600	1350
Tank-mounted 270 L. with dryer	1540	600	1375			
Tank-mounted 500 L.	N/A	N/A	N/A	1940	605	1500
Tank-mounted 500 L. with dryer						

* Consider an extra width of +65mm. for the 10 hp model.





Contact your local ALUP Kompressoren representative



Care

Care is what service is all about: professional service by knowledgeable people, using high-quality original parts.

Trust

Trust is earned by delivering on our promises of reliable, uninterrupted performance and long equipment lifetime.

Efficiency

Equipment efficiency is ensured by regular maintenance. Efficiency of the service organization is how Original Parts and Service make the difference.



www.alup.com

ALUP
Kompressoren